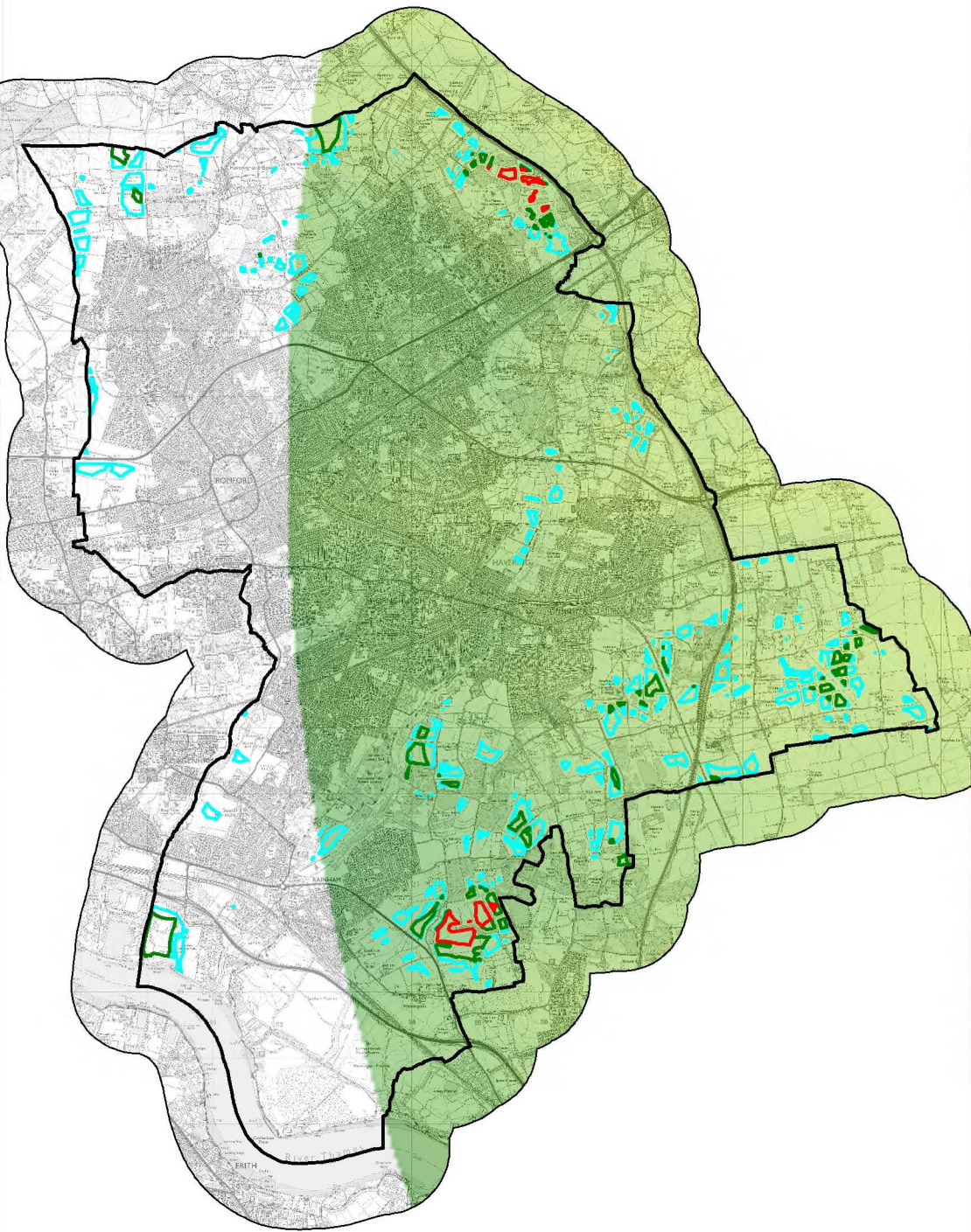


Stanstead Radar Viewshed



Southend Radar Viewshed

Havering Borough boundary

large wind areas

medium wind areas

small wind areas

The viewsheds show that the Stansted and Southend indicative radar consultation areas only partly extend into the Borough of Havering. The clearance with the Southend radar is in excess of 300m and is therefore unlikely to restrict development of wind turbines. The clearance with the Stansted radar varies between 100m and 35m. Detailed consultation with Stansted will be required.

Visibility to radar

-0.0001

-50.0000

-150.0000

Z-units:Meters

BNG Ref:	555032 : 186650	OS 100km Grid:	TQ	Landranger Ref:	177
Long : Lat DD	0.2366° : 51.5569°	Long : Lat DMS	0° 14' 11.8" : 51° 33' 24.9"		

Wardell Armstrong LLP

Wheal Jane Earth Science Park

Baldhu, Truro, TR3 6EH

Tel: +44 (0) 1872 560738

email: info@wardell-armstrong.com

web: www.wardell-armstrong.com

Drawn By:	SC	Date:	25/08/16
Checked By:	SA	Date:	25/08/16

Potential for Large, Medium & Small Wind Turbines

Local Plan Evidence Base for Wind Farm Development

Havering London Borough

RADAR_WIND_PE10658

Figure 1

© Crown copyright and database rights 2016 Ordnance Survey 100024327