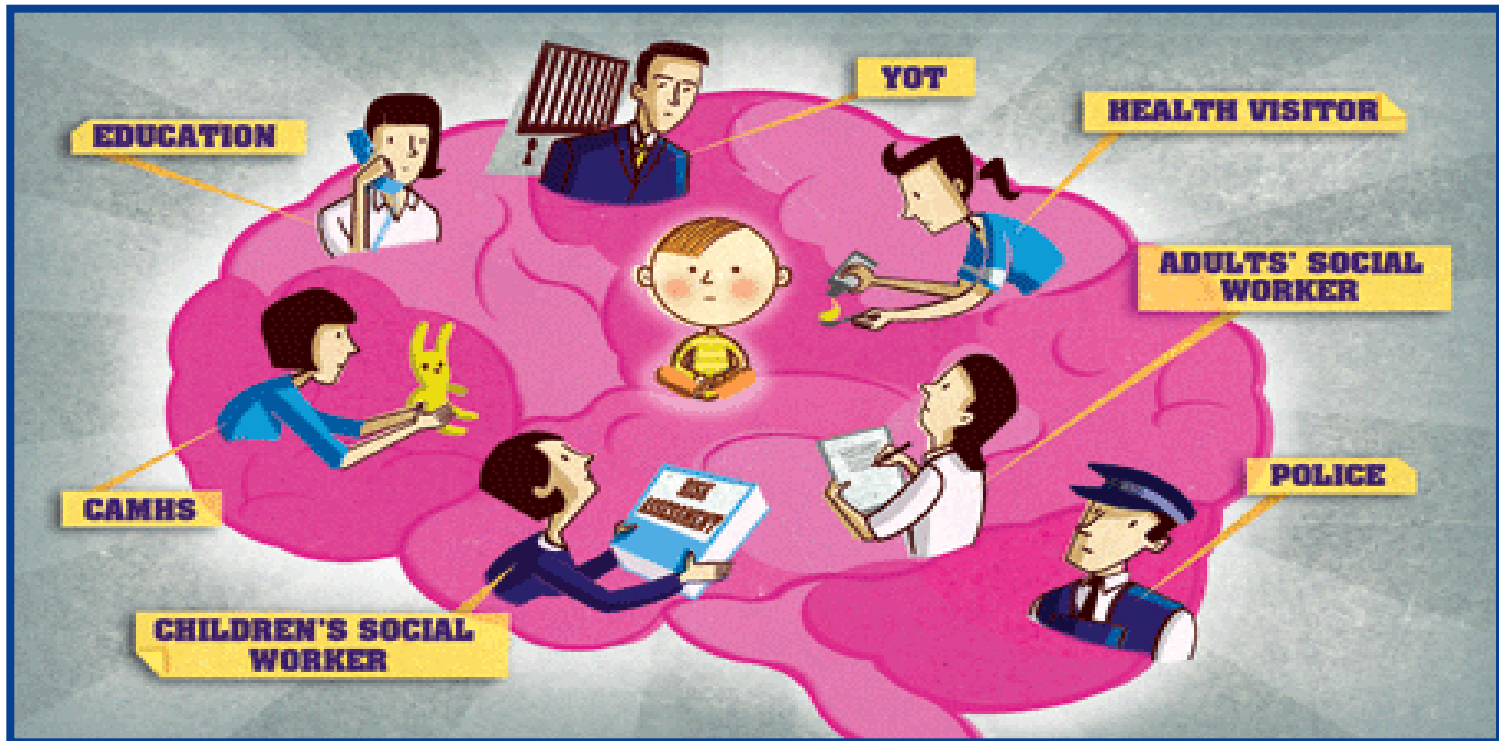


MASH

The Multi Agency Safeguarding Hub



Purpose of MASH

To improve the quality of information sharing and decision making at the point of referral.

By facilitating the sharing of intelligence across agencies, the MASH will help ensure safeguarding interventions are timely, proportionate and necessary.

How Does it work?

- The service is the front door for Children and Young People Services
- We have a Triage Team that deals with all referrals
- All referrals are read and BRAG'd by a Deputy Team Manager on the same day the referral is received
- The service gathers and shares information from a variety of partner organisations aimed at achieving accurate data to inform our intervention with children and their families

BRAG Ratings and Timescales

Referrals are BRAG'd as follows:

- **Red** – Decision within 4 hours
- **Amber** – Decision within 24 Hours
- **Green** – Decision within 72 hours
- **Blue** – NFA within 72 hours

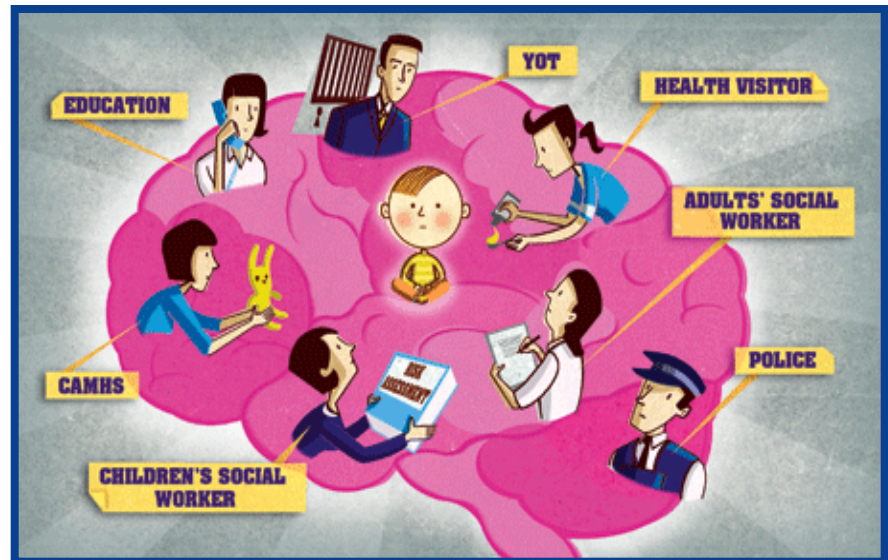
Who are in MASH presently?

ACTUAL PARTNERS

- Public Protection Desk (MET Police)
- Community Health Visitors
- Probation
- Housing
- Mental Health

VIRTUAL PARTNERS

- Youth Offending Service
- Drug and Alcohol Service
- Education
- Victim Support
- Independent Domestic Violence Advisors



Key Functions

Better more informed decision making leading to appropriate outcomes

- **Identification and Early Intervention:**
 - working with localities and early intervention service providers
 - support children and young people
- **Harm identification and reduction:**
 - Identify the highest levels of harm
 - Partners working together
- **Co-ordinating partner agencies:**
 - working with vulnerable children and young people

Benefits of MASH

- Greater information gathered from across the partnership at the referral stage which leads to better informed decision making
- Decision making about progress of a referral is made as a multiagency group and expertise about the way forward included in this
- Reduce impact on Front line team
- Enable families access to the right resources when required

Threshold and Escalation

- The Havering Safeguarding Children Board (HSCB) threshold document is held within the HSCB website.
- The expectation is that the document is considered and referenced when making referrals to MASH to assist referrer and MASH to set out risk and need.
- The threshold document is a guide to support the development of a shared understanding of risk and need.
- Concerns regarding MASH decisions should be escalated using the HSCB escalation document.

Contact Details

**London Borough of Havering
Havering Children and Young People Services**

Triage/MASH and Assessment Service

**Mercury House, 4th Floor, North Wing
Mercury Gardens
Romford, Essex RM1 3DW**

Triage Telephone Number: 01708 433 222

Fax Number: 01708 433 375 (MARF's)

Email Address:

TriageMASHandAssessment@havering.gov.uk

Triage/MASH Practice Manager, **Alison McDonald**: 01708 433 222